

Zone 4.1 - 74 Units

- Big villa 18x35 (Special) - 2 Units
- Big villa 20x35 - 2 Units
- Big villa 18x35 - 16 Units
- Big villa 20x30 - 3 Units
- Big villa 18x30 - 2 Units
- Semi-D 8x20 - 36 Units
- Semi-D 8x24 - 15 Units

Zone 4.2 - 175 Units

- Big villa 20x30 - 3 Units
- Big villa 18x30 - 12 Units
- Small villa 16x20 - 68 Units
- Semi-D 8x20 - 85 Units
- Semi-D 10x20 (Corner Units) - 7 Units

Zone 4.3 - 297 Units

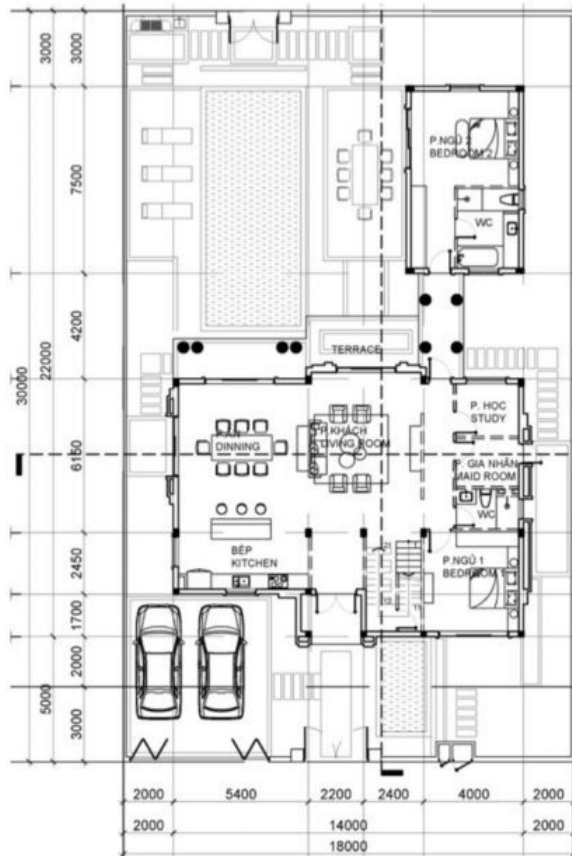
- Big-villa 18x30(Special 1) - 1 Units
- Big-villa 18x30(Special 2) - 2 Units
- Big-villa 18x30(Special 3) - 2 Units
- Big-villa 18x30 -28 Units
- Small villa 16x20 - 137 Units
- Small villa 18x20 - 19 Units
- Semi - D 8x20 - 108 Units



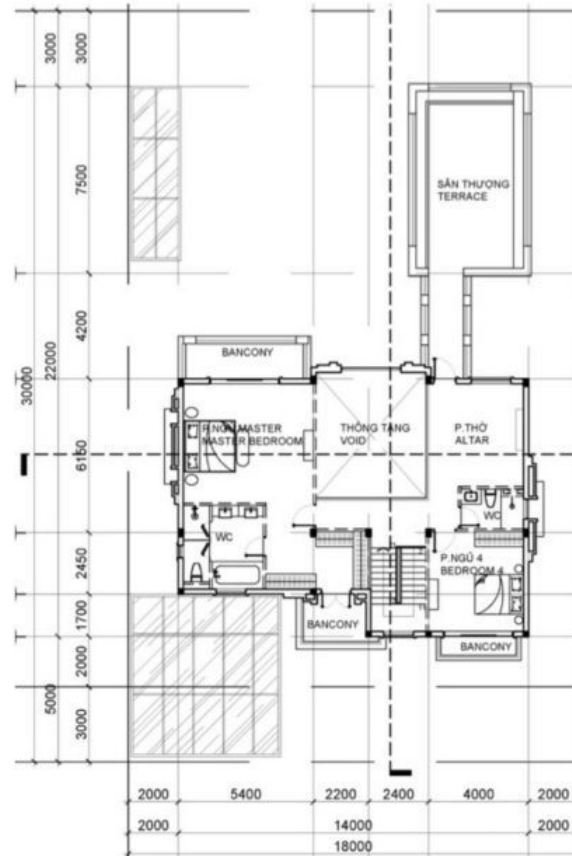
Big Villa

Land Area: 540 - 700m²

GFA: 323.1 m²



GROUND FLOOR PLAN



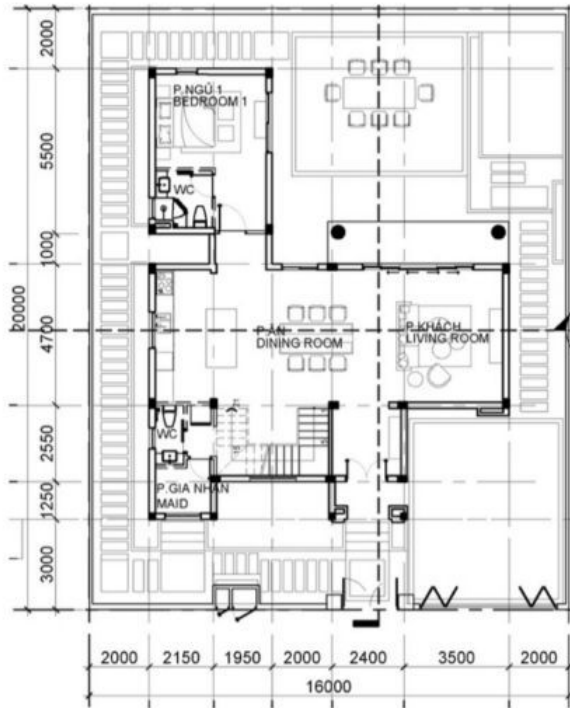
FIRST FLOOR PLAN

While every care has been taken to ensure the accuracy of the plans, the developer will not be held responsible for any changes due to authority requirements.

Standard Villa

Land Area: 320 - 340m²

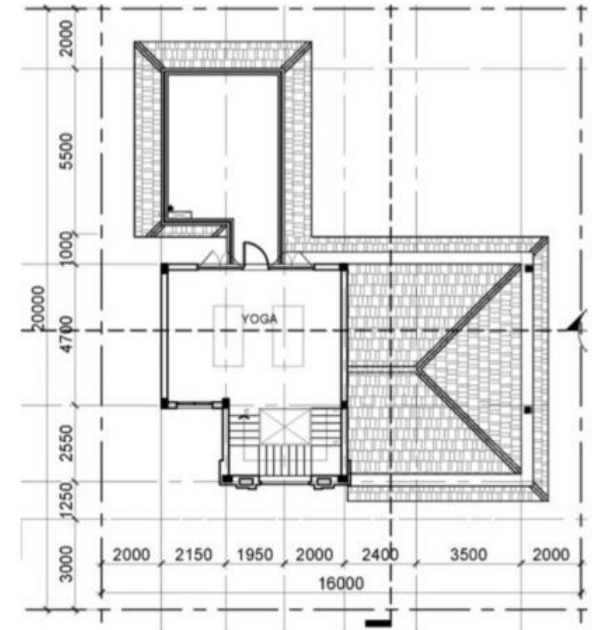
GFA: 279.64 - 281.19m²



GROUND FLOOR PLAN



FIRST FLOOR PLAN



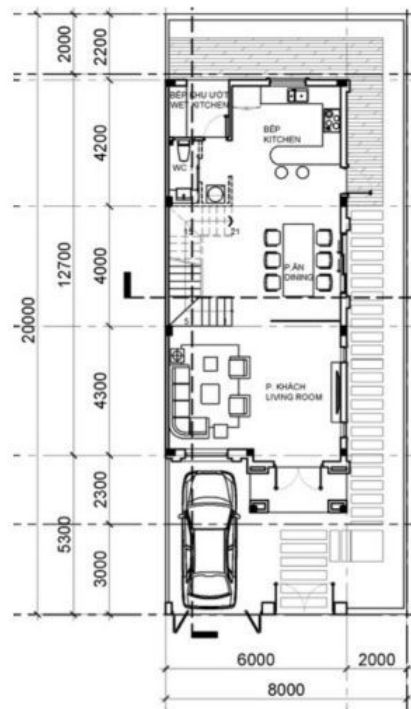
SECOND FLOOR PLAN

While every care has been taken to ensure the accuracy of the plans, the developer will not be held responsible for any changes due to authority requirements.

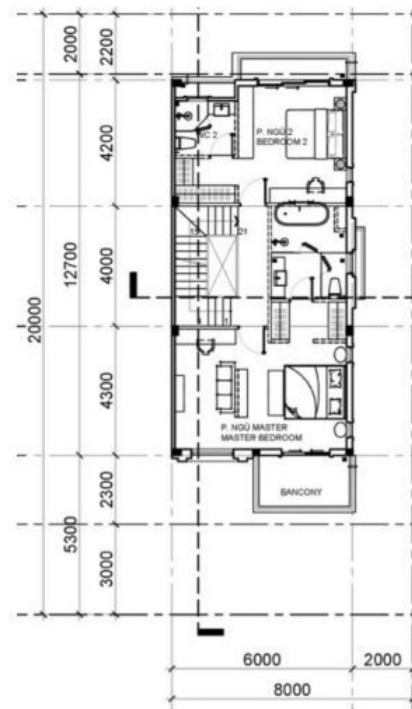
Semi-D

Land Area: 160 - 178m²

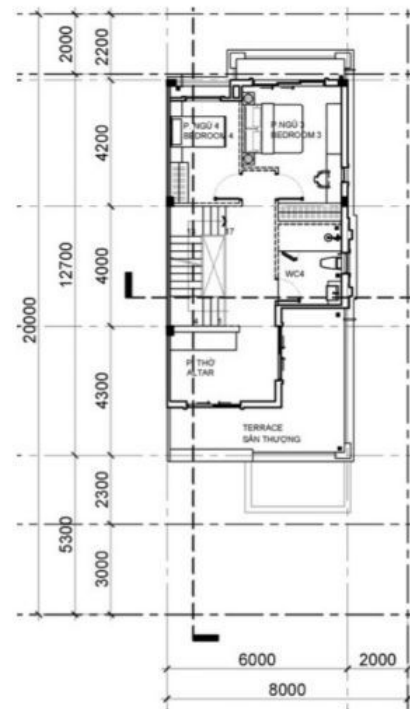
GFA: 224.4 - 220.46m²



GROUND FLOOR PLAN



FIRST FLOOR PLAN



SECOND FLOOR PLAN

While every care has been taken to ensure the accuracy of the plans, the developer will not be held responsible for any changes due to authority requirements.